

www.bafs.ie

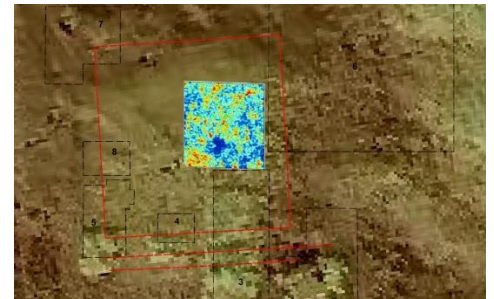


**BLACKFRIARY ARCHAEOLOGY
FIELD SCHOOL**

Digging the Past Growing the Future

info@bafs.ie

THIS SPRING TAKE PART IN A GEOPHYSICAL AND GROUND PENETRATING RADAR SURVEY OF AN IRISH MEDIEVAL CEMETERY!!



**SPRING 2018 GEOPHYSICAL SURVEY AND DATA PROCESSING INTRODUCTION COURSE
BLACKFRIARY, TRIM, CO MEATH, IRELAND!!!**

MARCH 26 – APRIL 6, 2018

Cost - €1650, includes accommodation and meals

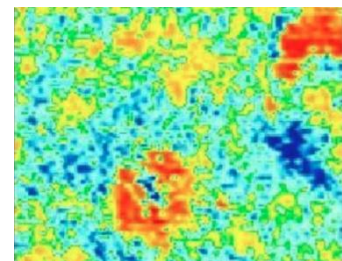
Students will gain hands on experience with geophysical survey, landscape analysis, processing and interpretation of results



The Blackfriary, built in 1263, is a Dominican Friary in Trim, Ireland's Heritage capital and home to Ireland's largest castle!!!

Contact: info@bafs.ie

[Like us on Facebook](#)



Surveys will be conducted at the Blackfriary and a nearby rural site to define the limits of a previously unknown Medieval graveyard

Essential to bring your own laptop